



Customer: Kifcure LLC
Address: 4N250 IL-47
Maple Park, IL 60151
Sample ID: 3000mg CBD/ISO 1371575416
Matrix: Tincture
Labnumber: 21F0134-02

Density (g/mL): .9698

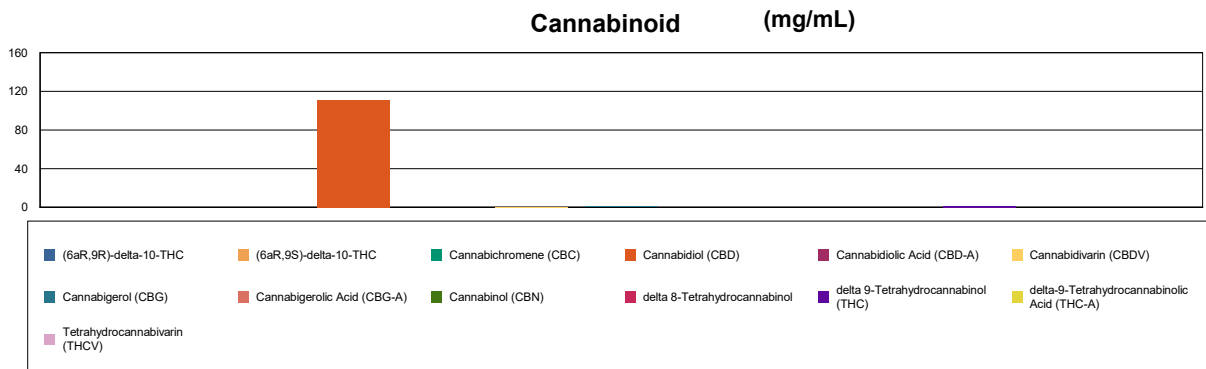
Cannabinoid Profile

Test Conditions: 23°C
Extraction Technician: SH
Analytical Chemist: SH

Extraction Date(s)	Analysis Date(s)
6/14/2021	6/14/2021

Cannabinoids (HPLC)	Results		
	LOD (mg/mL)	%	mg/mL
Cannabidiol (CBD)		11.10	111
delta 9-Tetrahydrocannabinol (THC)		0.18	1.78
delta-9-Tetrahydrocannabinolic Acid (THC-A)	<0.20		
delta 8-Tetrahydrocannabinol	<0.20		
(6aR,9S)-delta-10-THC	<0.20		
(6aR,9R)-delta-10-THC	<0.20		
Cannabidiol (CBD)		11.10	111.00
T.Active Cannabinoids		11.40	114.00
Total Cannabinoids		11.50	115.00
Max Active THC (delta-9-tetrahydrocannabinol)		0.18	1.78
Max Active CBD		11.10	111.00
T.Active Cannabinoids		11.40	114.00
Total Cannabinoids		11.50	115.00

Following USDA guidelines on uncertainty, Altitude Consulting's uncertainty is calculated to be +/- 2% for all cannabinoids using a coverage factor of 2 (95% confidence interval). Measurement uncertainty has not been factored into reported values.
Blank results indicate the compound was below the limit of detection.




Gary Brook - Laboratory Director - 6/15/2021

Reporting Limits will vary based on sample extraction weight used for the analysis.

The results of this report are based solely on the sample submitted and cannot be reproduced. Decision Rule: Measurement uncertainty is not accounted for in the reported values. Results are based solely on calculated numbers. Altitude Consulting makes no Statements of conformity. **Pesticide, metal, and microbial analyses are subcontracted to ISO 17025 laboratories.**