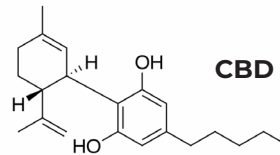


KIFCURE

APOLLO
SUPER HARDY
RICH TERPENES
7-10% CBD



SUMMARY



%CBD

8.4

%THC

0.26

RATIO

32:1

AVAILABLE AS
SEED

GROW CHARACTERISTICS

Known for resistance to a whole assortment of pests, molds and mildews as well as frost and cold weather, Apollo is hardy and fairly rich in terpenes which increases pest resistance. Clocking in between 7-10% CBD with tolerably low levels of THC.

APPEARANCE AND TASTE

Spicy, peppery and fruity in both taste and smell, Apollo is a lighter green flower with deep magenta dappled throughout. Light in strength and intensity, Apollo is a relaxed and mellow strain.

FEMINIZED: YES

GERMINATION RATE: 96%

TIME TO HARVEST: 8 WEEKS

kifcure



KIFCURE.COM
855.KIFCURE

