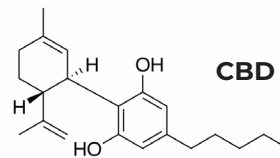


KIFCURE

OTTO II STOUT
HIGH CBD
RARE TERPENES
10-15% CBD



SUMMARY



%CBD
13

%THC
0.23

RATIO
56:1

AVAILABLE AS
SEED & SEEDLING

GROW CHARACTERISTICS

The Otto II Stout is a hybrid high-CBD hemp seed developed in Colorado. Otto II is stable and breeds true for high-ratio CBD expression. Otto II is excellent for use in botanical extraction applications. Stable genetics more predictable indoors. Up to 13% CBD.

APPEARANCE AND TASTE

Testing high in b-Myrcene, Limonene and b-Caryophyllene, also sometimes high in Farnesene - known for a Green Apple flavor and aroma. Medium light green flowers.

FEMINIZED: YES

GERMINATION RATE: 99%

TIME TO HARVEST: 8 WEEKS

Kifcure



KIFCURE.COM
855.KIFCURE

