

KIFCURE CBG DOMINANT

Madison

BULK GENETICS
10% CBG



SUMMARY

CANNABINOIDS	THC:	RATIO	FORM
10% CBG	LESS THAN .2%	120:1	SEED

AVAILABILITY

Seed

DESCRIPTION

Indoor cultivated, cold stored CBG dominant seeds, feminized with a high germination rate and incredible cannabinoid ratio.

GROW CHARACTERISTICS

Each plant yields about ¾-1lb of dry cured CBG flower - reaching a shorter, bushier height of 3-4" stout, with multiple top colas. Hearty, wind resistant, pest resistant.

APPEARANCE AND TASTE

Silver buds with dense and abundant trichomes. Mild nose, mild taste.

CANNABINOID PROFILES

CBGA, CBG, CBDA, CBD, CBC

CANNABINOID CONTENT

9.95% CBG/A to 0.12% TOTAL THC

TERPENE PROFILE

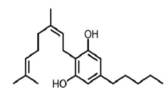
Pending

FEMINIZED: YES

GERMINATION RATE: 95%

TIME TO HARVEST: 9 WEEKS

CBG



KIFCURE.COM
855.KIFCURE

